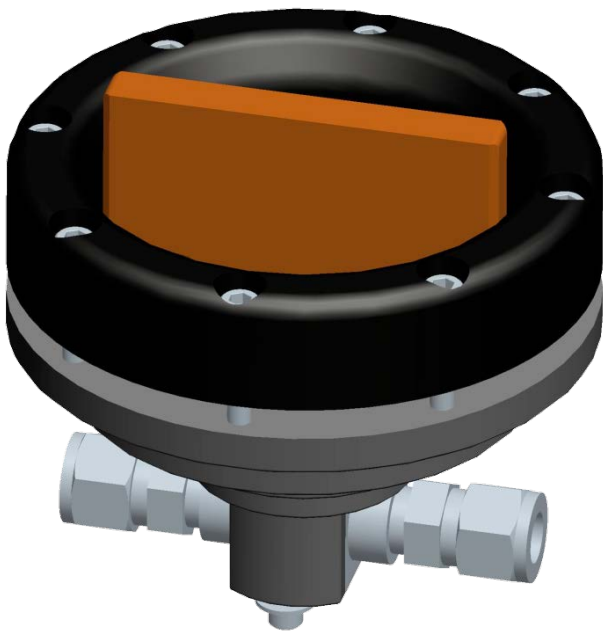


PANEL MOUNTED ROV OPERATED VALVES

SPECIFICATION:

- $\frac{1}{4}$ turn operation
- Ring or flatbar interface
- Excess torque is not transferred to the valve stem
- Available for a range of valve sizes



Accumulator package with panel mounted valves



KYSTDESIGN AS

Eikeskogvegen 80 - 5570 Akksdal, Norway
post@kystdesign.no - Phone: +47 52 70 62 50

www.kystdesign.no