



Certified according to DNV standard for certification No.2.22, Lifting Appliances.

# KD20 TMS

Electro Hydraulic Tether Management System



**KYSTDDESIGN**  
SUB - SEA TECHNOLOGY

# KD20 TMS

The KD20 TMS is an electro hydraulic Tether Management System (TMS) with tether capacity of 500m Ø35mm tether.

The large diameter tension wheel together with tether force control and drum with lebus grooves ensures gentle and reliable handling of the tether.

## GENEREL

Supplier	KYSTDESIGN AS
Max. Width	2330 mm
Min. Width	2100 mm
Height	2275 mm
Depth rating	Up to 6000 msw
SWL liftpoint (LARS interface)	12000 kg
SWL latch (ROV interface)	10000 kg
Tether capacity	500m with ø35mm tether
Min. Tether Bending Diameter	800 mm
Weight in air excl. tether	2180 kg
Weight submerged excl. tether	~1450 kg
Hydraulic Fluid	Tellus S3M22
Power Supply	3kV/3ph/60Hz
Total Power	15 kW
Slip Ring	Focal 176 type

## HYDRAULIC INTERFACE

Prepared for 3x additional valves for auxiliary equipment e.g. hydraulic P&T etc.

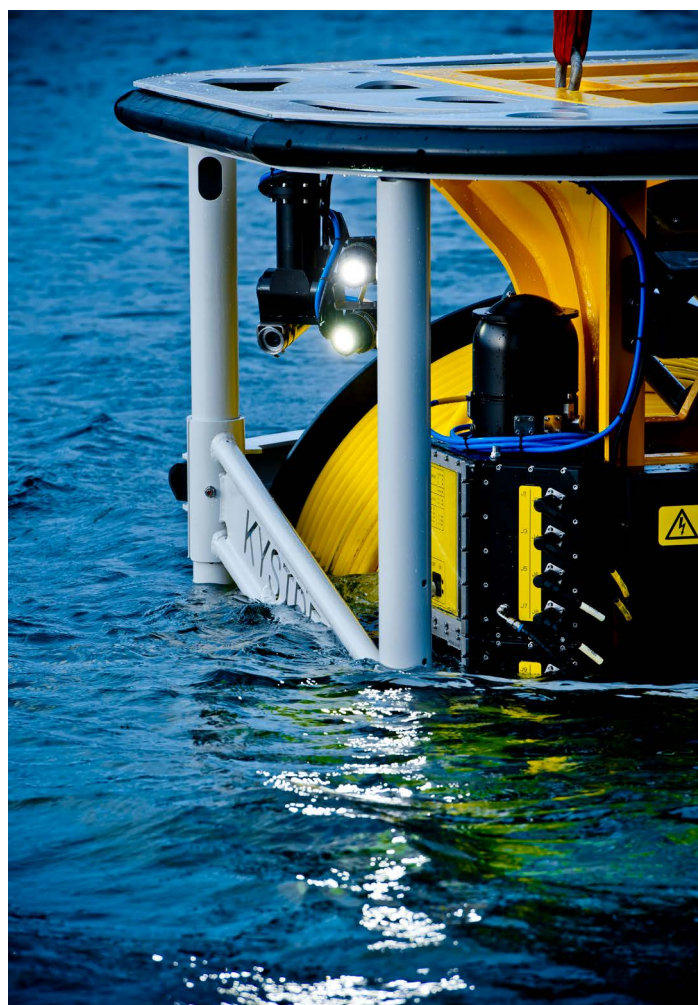
## ELECTRICAL INTERFACE

Capacity for 2x cameras

Capacity for 2x dimmable lights

4x additional serial channels

Prepared for electrical P&T control



## KYSTDESIGN AS

Eikeskogvegen 80 - 5570 Akdsdal, Norway  
post@kystdesign.no - Phone: +47 52 70 62 50

[www.kystdesign.no](http://www.kystdesign.no)