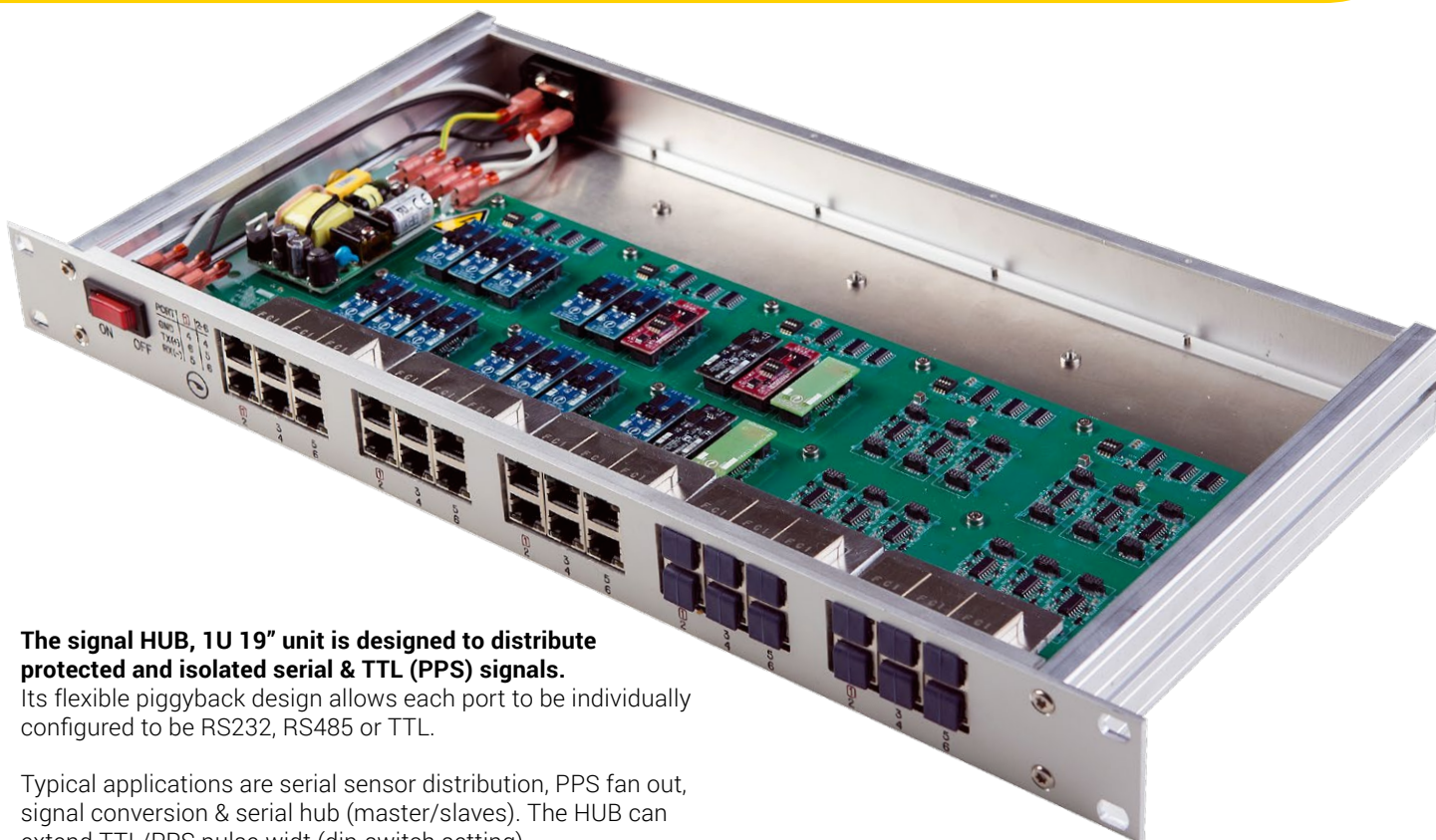


KD-CON™ HUB

1U HUB with 5 banks of 1:5 bidirectional, fully protected & isolated I/O ports



The signal HUB, 1U 19" unit is designed to distribute protected and isolated serial & TTL (PPS) signals.

Its flexible piggyback design allows each port to be individually configured to be RS232, RS485 or TTL.

Typical applications are serial sensor distribution, PPS fan out, signal conversion & serial hub (master/slaves). The HUB can extend TTL/PPS pulse width (dip-switch setting).

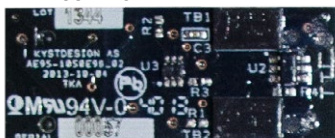
RS485 PIGGYBACK MODULE



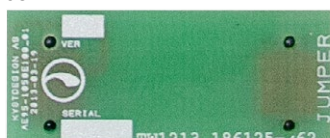
RS232 PIGGYBACK MODULE



TTL PIGGYBACK



JUMPER



FEATURES

- One HUB support up to 5 banks of 1:5 bidirectional RJ45 ports
- All ports have TX & RX signal lines (RS485 + & -)
- Compatible with KD-CON™ fiber telemetry system
- Diagnostics / traffic monitoring through front panel LED indicators
- Each bidirectional port is fully configurable by replaceable piggyback modules
- Piggybacks available: RS232 / RS485 / TTL / user defined
- Piggybacks are fully isolated: 2500vrms
- Piggybacks can be mixed enabling signal conversion
- <300nSec latency, >250kbps comms speed
- 1U, 19", 23cm
- Configurable TTL signal pulse width extension; +10-600mSec. (PPS)
- Can be used as a fully isolated master / slaves serial hub with mixed type of serial signals
- Integrated mains supply, 90~264 Vac / 3.3 Vdc, 20W

PART NO:

101230	AF45-5020E03	KD-CON™ HUB
101084	AF95-1050E96	KD-CON™ RS232 PIGGYBACK
101085	AF95-1050E97	KD-CON™ RS485 PIGGYBACK
101086	AF95-1050E98	KD-CON™ TTL PIGGYBACK

KYSTDESIGN AS

Strandgaten 202 - 5525 Haugesund, Norway
post@kystdesign.no - Phone: +47 52.70 62 50

www.kystdesign.no

