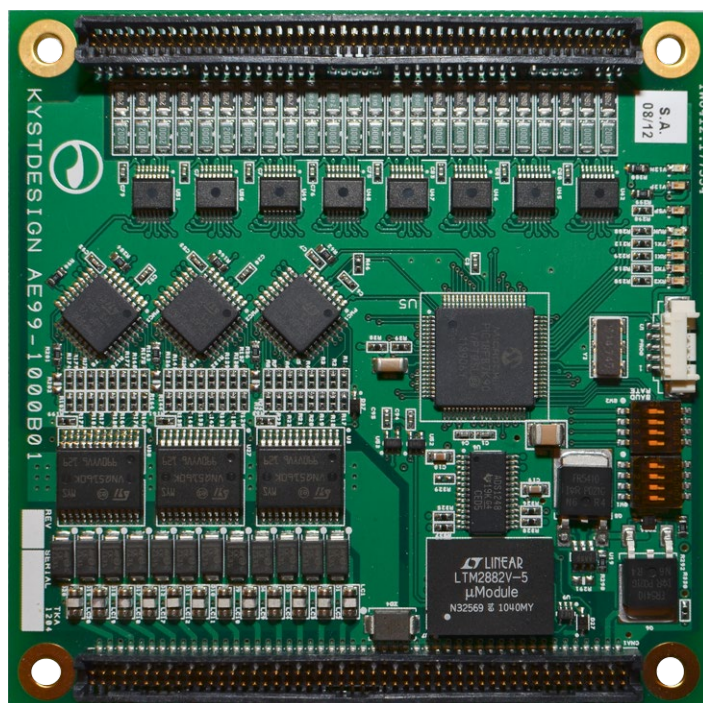
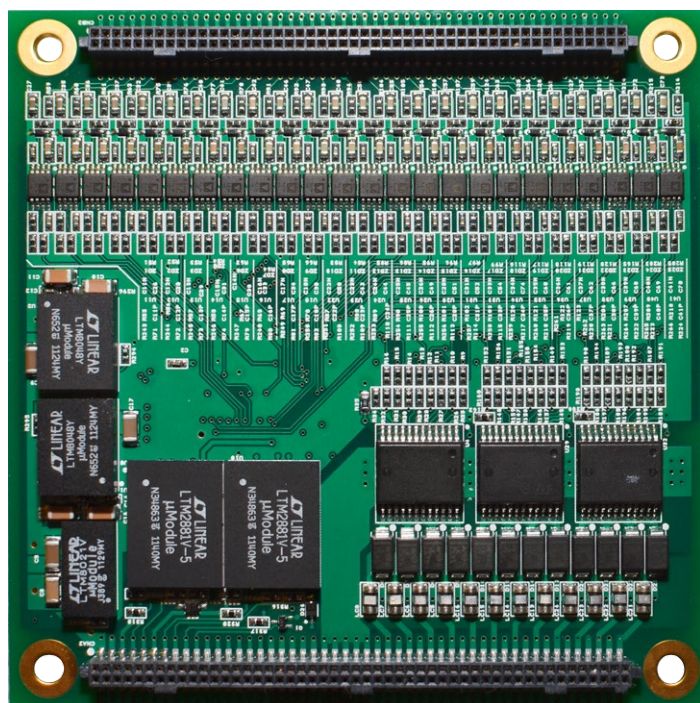


# PROPORTIONAL 24 CH VALVE DRIVER & I/O CARD

The card is designed to be the backbone of our remote operated systems. It can run 24 proportional valves and read 28 sensors, but is still very compact. The card is based upon years of experience and is made to withstand harsh environment. The board has redundant comms and are stackable to enable redundant operation / expansion.



## MAIN FEATURES:

- Pressure tolerant to 3000 msw
- Very compact: 85 x 85 mm
- Stackable:
  - Redundant operation
  - Expandable
- Dual Isolated Comms:
  - Redundant link
  - 2 x RS485/RS232
- Supports several telegram formats, with minimum of overhead
- Addressable
- Custom tailored termination boards with LED diagnostics
- All outputs are short circuit protected
- 24 x PWM outputs (Proportional valves)
- 28 x Sensor inputs
  - 22 x Analog (0-10vdc / 0-20mA), 2 x Digital
  - Individually remotely configurable:
    - Volt / current input
    - 24v sensor power
    - Diagnostics
    - Analog and digital inputs can be configured as counter/encoder inputs
- 4 x Temperature Inputs, PT100

## KYSTDESIGN AS

Strandgaten 202 - 5525 Haugesund, Norway  
post@kystdesign.no - Phone: +47 52.70 62 50

[www.kystdesign.no](http://www.kystdesign.no)